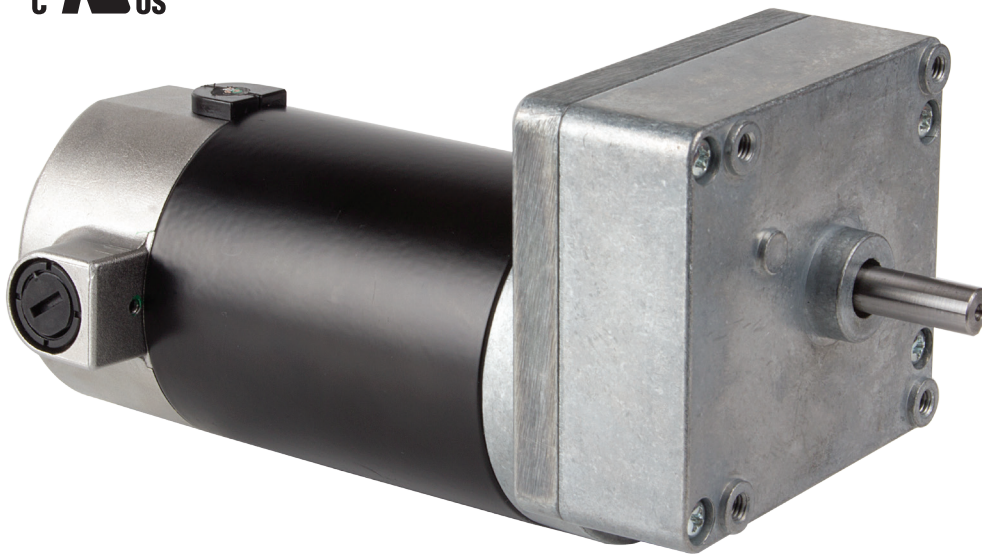


# DK SERIES

Parallel Shaft Geared Motors



## Key Features

- Motor type: Permanent Magnet DC
- Enclosure: totally enclosed nonventilated
- Gearcase: die-cast zinc
- Lubrication: grease-filled
- Gears: heat-treated steel and acetal
- Bearings: porous bronze sleeve on case; ball on motor
- Mounting: all-position
- Rotation: reversible
- Thermal protection: none
- Brushes: externally replaceable
- Ambient: 40°C
- Seals: O-ring type on output shaft

## Specifications

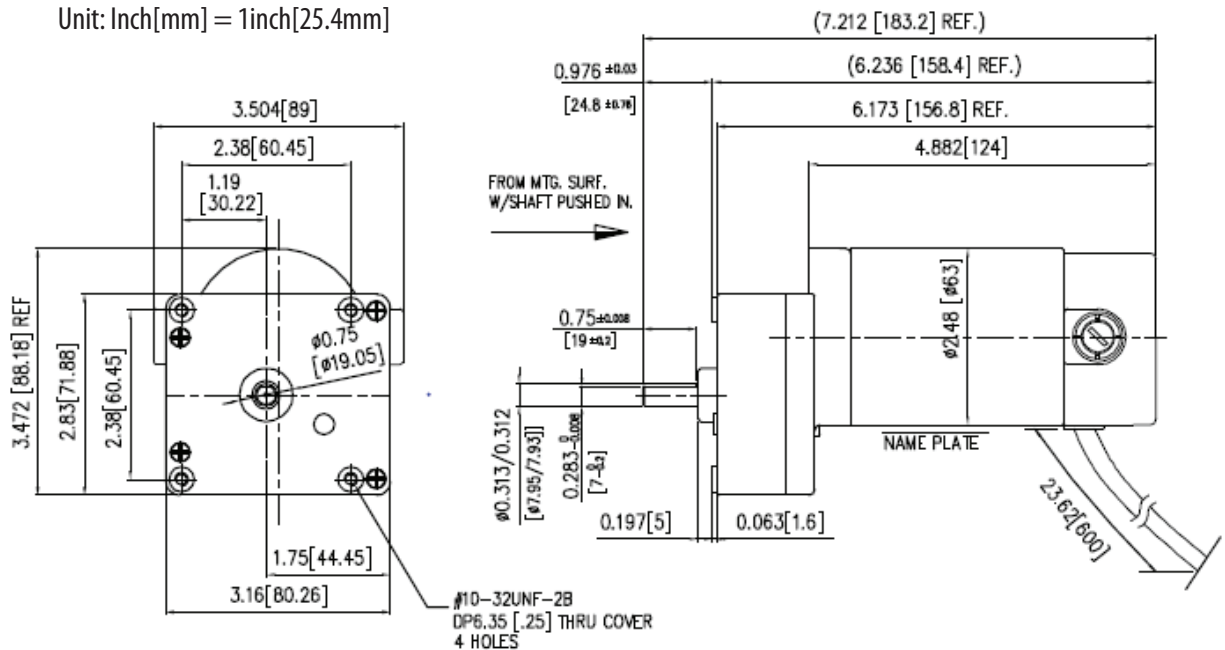
Part Number	VDC	Full load Nameplate RPM	Torque (in-lb)	Overhung load (lb)	Input HP	Gear Ratio	Full load Amps	Length less shaft (in)
DK4A430D	12	6	50	50	1/30	430	3.1	6 1/6
DK4A279D	12	9	50	50	1/30	279	3.1	6 1/6
DK4A144D	12	18	50	50	1/30	144	3.1	6 1/6
DK4A103D	12	25	40	50	1/30	103	3.1	6 1/6
DK4A64D	12	41	26	50	1/30	64	3.1	6 1/6
DK4A32D	12	80	13	50	1/30	32	3.1	6 1/6
DK4E430D	90	7	50	50	1/30	430	0.4	6 1/6
DK4E279D	90	11	50	50	1/30	279	0.4	6 1/6
DK4E144D	90	21	50	50	1/30	144	0.4	6 1/6
DK4E103D	90	29	40	50	1/30	103	0.4	6 1/6
DK4E64D	90	47	26	50	1/30	64	0.4	6 1/6
DK4E32D	90	93	13	50	1/30	32	0.4	6 1/6

## Cross Reference

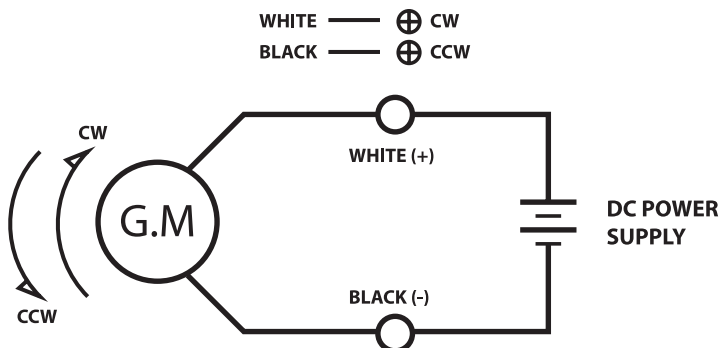
Part Number	Dayton Part Number	Bison Part Number	Gleason Avery Part Number
DK4A430D	1LPV8	011Q507-0482	SV706L†
DK4A279D	1LPV7	011Q507-0314	SV713L
DK4A144D	1LPV6	011Q507-0161	SV721L
DK4A103D	1LPV5	011Q507-0098	SV732L
DK4A64D	1LPV4	011Q507-0063	SV750L
DK4A32D	1LPV3	011Q507-0031	SV7100L
DK4E430D	1LPV9A	011Q527-0482	SV706D
DK4E279D	1LPW1A	011Q527-0314	SV713D
DK4E144D	1LPW2	011Q527-0161	SV721D†
DK4E103D	1LPW3	011Q527-0098	SV732D
DK4E64D	1LPW4	011Q527-0063	SV750D
DK4E32D	1LPW5	011Q527-0031	SV7100D

† 100% match. For rest of Gleason Avery products, Output RPM are different.

## Dimensions Unit: Inch[mm] = 1inch[25.4mm]



## Note



The direction of motor rotation is as viewed from the output shaft end of the motor.